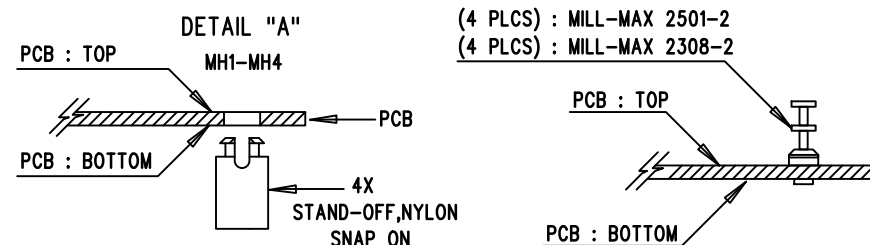
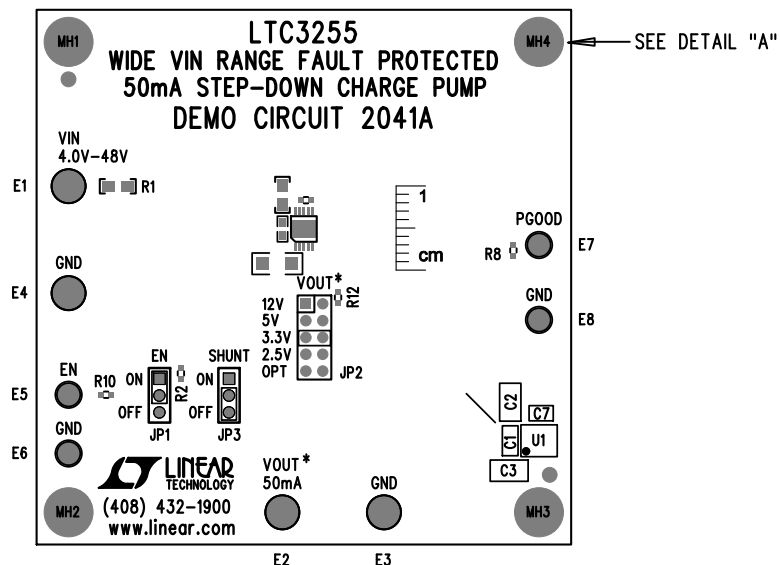



REVISION HISTORY				
ECO	REV	DESCRIPTION	APPR	DATE
-	2	PRODUCTION FAB	MARTY M.	06-05-13

# NOTES: UNLESS OTHERWISE SPECIFIED

1. WORKMANSHIP SHALL BE IN ACCORDANCE WITH IPC-A-610.
2. ASSEMBLY PROCESS SHALL INCLUDE: REFLOW SOLDER TOP SIDE SMD.
3. PARTS TO OMIT WILL BE SPECIFIED ON THE BILL OF MATERIALS  
LOCATIONS OF OMITTED PARTS SHALL BE FREE OF SOLDER.  
MASK THE SOLDER STENCIL WHERE SMT PARTS ARE OMITTED.
4. INSTALL SHUNTS AS SHOWN ON ASSY DRAWING.
5. DEPANELIZE BOARDS AFTER ASSEMBLY AND ROUTE-OUT THE BREAKOUT  
TABS ON FOUR SIDES OF THE BOARD EDGE.
7. INSTALL TURRETS AND 4 STAND-OFFS AT FOUR CORNERS AS SHOWN BELOW:



APPROVALS			
PCB DES.	NC		
APP ENG.	MARTY M.	TITLE: TOP ASSEMBLY DRAWING: WIDE VIN RANGE FAULT PROTECTED 50mA STEP-DOWN CHARGE PUMP	
		SIZE	IC NO. LTC3255EMSE
		N/A	DEMO CIRCUIT 2041A
			REV. 2
SCALE = NONE		FILENAME: DC2041A-2.PCB <span style="float: right;">SHT 1 of 2</span>	